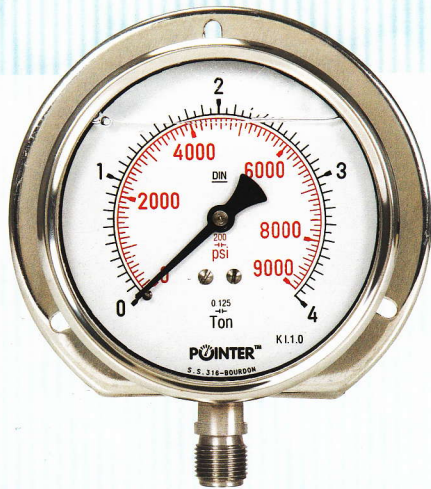
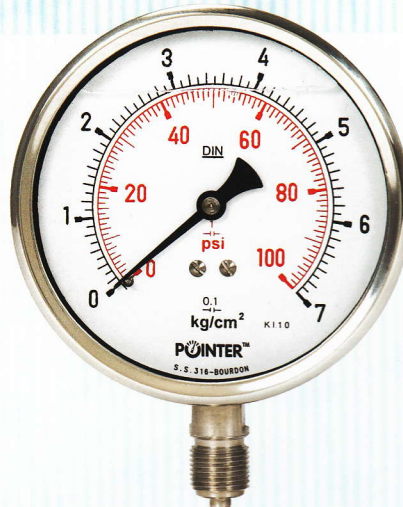


Glycerin Filled Pressure Gauges

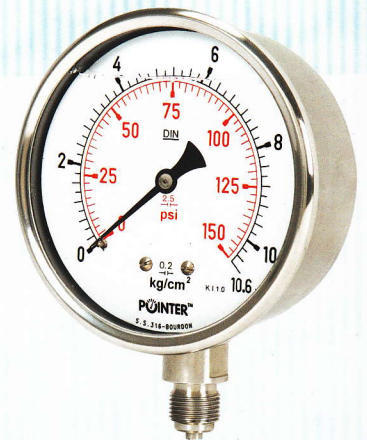
"POINTER" Glycerin filled pressure gauges are ideal for dampening the effect of vibration & pulsation. It also lubricate the movement & internal parts which extends the life of gauge. It enhance the reliability and integrity of measuring system for long periods under extreme operating condition.



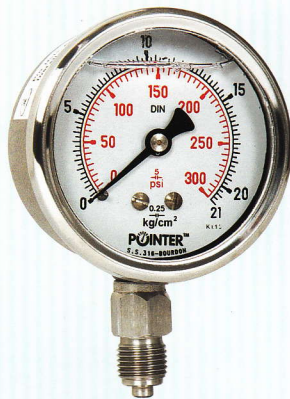
100mm Surface Mounting



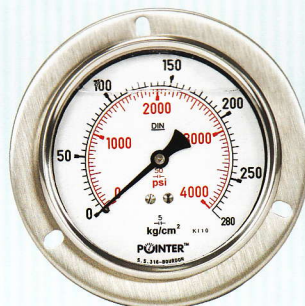
150mm Bottom Mounting



100mm Bottom Mounting (SP)



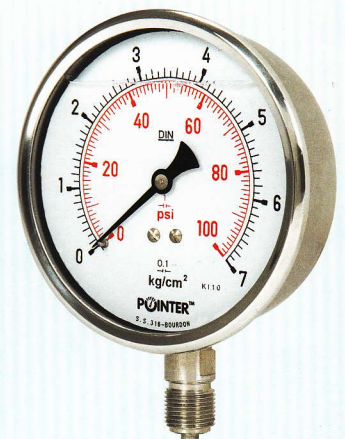
63mm Bottom Mounting



63mm Panel Mounting



63mm Back Conn. (Bracket)



100mm Bottom Mounting (LDS)

CONSTRUCTION FEATURES

Dial Size	: 63mm, 100mm, 150mm & 250mm
Accuracy	: $\pm 1\%$ of full scale
Case & Bezel (IP-65)	: SS 304, Crimp Type / Snap Action Bayonet type
Movement	: SS 304 / Brass (63 mm)
Pressure Element	: SS 316 (≤ 70 bar 'C' Type / > 70 bar Coil Type)
Socket	: SS 304 / SS 316
Dial	: Aluminum white painted with 270 degree black scale marking
Pointer	: Al. / Brass with black finish
Window	: Acrylic / Safety glass
Blow Out Protection	: On top at 0.6 Kg/cm ²
Over Load Protection	: 125% of f.s.d. for ≤ 150 Kg/cm ² / 115% of f.s.d. for > 150 Kg/cm ²
Joints	: Argon arc welded / Brass silver brazed
Mounting	: Stem (Bottom), Surface, Panel Mounting, Flush Panel (Bracket Type)
Connection	: 1/4" / 3/8" / 1/2" BSP / NPT
Scale Range	: Vacuum, Compound & Pressure up to 1400 kg/cm ²

MODEL OPTION

- SP** : All SS Models with Heavy Duty Parts.
- LDS** : Model with SS-304 Case, Bezel, Socket, SS-316 Bourdon & Brass Movement
- ECO** : Model in Carbon Steel (Nickel Plated) Case, SS-304 Bezel, Sockets & Brass Movement

APPLICATION

Air Compressor, Hydraulic Presses, Pumps, Industrial Power Plants, Marine engines, Pipelines and Transmission Stations where Vibration & Pulsation are destructive factors.