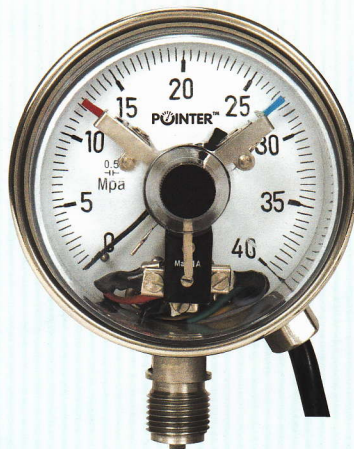


Electric Contact Gauges

"POINTER" Electric contact gauges are suitable for the measurement & control of line pressure / Temperature by switching 'ON & OFF' electrical equipment which eliminate the need of separate switches for equipment.



100mm Bottom Mtg
Temp. Gauge with El. Contact



100mm Bottom Mtg
Pressure Gauge with El. Contact



150mm Panel Mounting
Pressure Gauge with El. Contact

CONSTRUCTION FEATURES

| | |
|----------------------|---|
| Dial Size | : 100mm & 150mm |
| Accuracy | : $\pm 1\%$ of full scale |
| Case & Bezel (IP-65) | : SS 304 Snap Action Bayonet type |
| Movement | : SS 304 |
| Pressure Element | : SS 316 (≤ 70 bar 'C' Type / > 70 bar Coil Type) |
| Socket | : SS 304 / SS 316 |
| Dial | : Aluminum white painted with 270 degree black scale marking. |
| Pointer | : Al. / Brass, Zero adjustment / Micro Zero Adjustment Pointer. |
| Window | : Acrylic glass. |
| Blow Out Protection | : Back side at 0.6 Kg/cm^2 |
| Over Load Protection | : 125% of f.s.d. for $\leq 150 \text{ Kg/cm}^2$ 115% of f.s.d. for $> 150 \text{ Kg/cm}^2$ |
| Joints | : Argon arc welded. |
| Mounting | : Stem (Bottom), Panel Mounting, Flush Panel (Bracket Type). |
| Scale Range | : Vacuum & Pressure up to 700 kg/cm^2 . |
| Contact Details | : 380V AC/DC, 50 V A / 30 watts, Current not exceed 1 Amp. |
| Contact Type | : Magnetic Single Contact (1NOs, 1NC) Double (1 NO+NC, 1 NC+1NO, 2 NO, 2 NC) |

OPTIONAL FEATURES

- Diaphragm Sealed with Electrical Contact available on request.
- LPD with Electrical Contact available on request.

APPLICATION

Control & Regulation of industrial process.
Monitoring of plants and switching of electric circuit.
Power plants, Chemical & petrochemical industries, pump, motor, turbine etc...